



**One Low Admission Price Covers It All:**  
Breakfast, gourmet luncheon, soft drinks, trade show, 5 ed. programs, tours. Take the low CNLA member rate if you're a member of CFA, CGGA, or CGKA

# Register

**RETURN THIS FORM & YOUR PAYMENT TO:**

Connecticut Nursery & Landscape Association  
P.O. Box 414, Botsford CT 06404  
800-562-0610 • Fax 203-261-5429  
ConnNrsry@aol.com

Company \_\_\_\_\_  
Contact \_\_\_\_\_  
Address \_\_\_\_\_  
Town \_\_\_\_\_ State \_\_\_\_\_ Zip \_\_\_\_\_  
Phone \_\_\_\_\_ Fax \_\_\_\_\_  
E-mail \_\_\_\_\_

**Print Names of Attendees for Badges**

\_\_\_\_\_  
\_\_\_\_\_  
\_\_\_\_\_

# people	Advance Registration	1-4 Persons	5+ persons	Sub Totals
	CNLA member companies	\$45/person	\$37/person	
	Nonmember companies	\$55/person	\$47/person	
	Students or Youths under age 18	\$30/person		
<b>CNLA Annual Dues</b> Join now and take the lower member regis fee! Call the CNLA office for your dues rate.				
<b>Total Check/Credit Card Enclosed</b>		<b>\$ _____</b>		



**CHARGE TO YOUR CREDIT CARD:**

Card Number: \_\_\_\_\_  
Expiration: \_\_\_\_\_  
Signature: \_\_\_\_\_

**All fees nonrefundable.** Payments to the Connecticut Nursery & Landscape Association may be tax deductible as business expenses, not as charitable contributions. Substitutions may be made on day of meeting at no charge.

You can also register online at [www.FlowersPlantsInCT.com](http://www.FlowersPlantsInCT.com) click on the Summer Field Day link



## CONNECTICUT NURSERYMEN'S FOUNDATION EVENTS

### CNF Silent Auction

You can bid on dozens of products donated by our Trade Show exhibitors. Proceeds go to the Foundation and its scholarship endowment. Starts at 10:00am. Closes at 1:30pm.

### UConn Dairy Bar Ice Cream

Buy some delicious UConn-made ice cream with proceeds going to the CNF Scholarship endowment. Provided by the UConn College of Agriculture Alumni.



### REGISTER TODAY BY

phone 800-562-0610  
fax 203-261-5429  
e-mail ConnNrsry@aol.com  
online [www.FlowersPlantsInCT.com](http://www.FlowersPlantsInCT.com)

### CNLA Volleyball Tournament

Sign up your team to win CNLA's annual trophies. Tournament starts at 10:00am.



## Directions

**DIRECTIONS TO VETERANS' PARK, 570 Nova Scotia Hill Road, Watertown:**

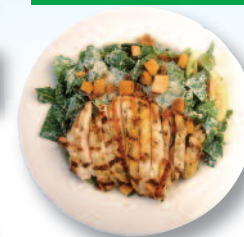
- **FROM I-84:** Take I-84 to Route 8 North in Waterbury. Then follow directions below.
- **FROM ROUTE 8 NORTH:** Take exit 37. At end of the ramp take a left. At the second set of lights take a right onto Buckingham Street. Follow 1/2 mile to a blinking light and take a right onto Nova Scotia Hill Rd. Park is approximately 1/4 mile on the right hand side.
- **FROM ROUTE 8 SOUTH (THOMASTON EXIT):** Take Route 6 West in Thomaston. Follow Rte 6 to Rte 262. Take a left at Buckingham Street (Westbury Corner Store is on your right). Follow to blinking yellow light and take a left onto Nova Scotia Hill Rd. The park is approximately 1/4 mile on the right.

Your host  
Planters  
Choice



# Learn, Relax & Have Fun.

## Good Food! Treat Your Staff.



Enjoy a continental breakfast, and then a delicious luncheon. Soft drinks and dessert, too. ...All included in your admission fee. Breakfast served 8:00-10:00am. Luncheon 11:30am-1:30pm. Field Day beverages sponsored by Harrell's



## Outdoor Equipment & Trade Show

See the newest products & services for nurseries, garden centers, and landscapers at our Trade Show. Up to 75 companies will have exhibits on-site in our huge tent. Many will be also showing their large pieces of equipment.

**Open 8:00am-3:00pm.**



**WEDNESDAY, JULY 13 • WATERTOWN • Hosted by Planters' Choice Nursery**

# Field Day Education Programs

## How to Deal With Local Officials.

Whether you're a grower, a garden center or a landscaper, chances are you've had a tough time complying with a local official somewhere. Learn how to deal effectively with them.  
 Speaker: Joan Nichols of the Connecticut Farm Bureau.  
 9:30-10:30am



## Insectos y ácaros de importancia durante el verano Important summer insect and mite pests Program for Spanish-speaking staff

Speaker: Ana LeGrand, University of Connecticut.  
 10:00-11:00am.



## The Do's & Dont's of Fall Turf Renovation

The cooler, wetter autumn months can be a good time to re-do a turf job. Learn how to do it right. Instructor: Mark Kokinchak, Planter's Choice Nursery. 11:00am-Noon



## Growing Plants on Preserved Farmland

Up to now, the state has frowned on nurseries and greenhouses using preserved farmland, but that may be changing. What growing practices would satisfy these officials? Agriculture Commissioner Steve Revczky, CT Farmland Preservation Director Jay Dipple, and Kip Kolesinskas of the USDA Natural Resources Conservation Service. 1:00-2:00pm

## Maintaining An Established Landscape With Organics

Learn how to use natural and biological products to improve plant vigor and reduce plant stress. Speaker: John Hunt, Biological Products Group, Lebanon Seaboard Co. 2:00-3:00pm.



get pesticide credits for these programs marked with the leaf

# Bus Tours to...

Board our bus to see the production fields of Planters' Choice Nursery, and the nearby Hosking Nursery in Watertown, more than 100 years old!



# CONNECTICUT Nursery & Landscape Summer FIELD DAY

Wednesday, July 13 at  
 Veterans Park, Watertown CT  
 8:00am-3:00pm  
 hosted by Planters' Choice Nursery



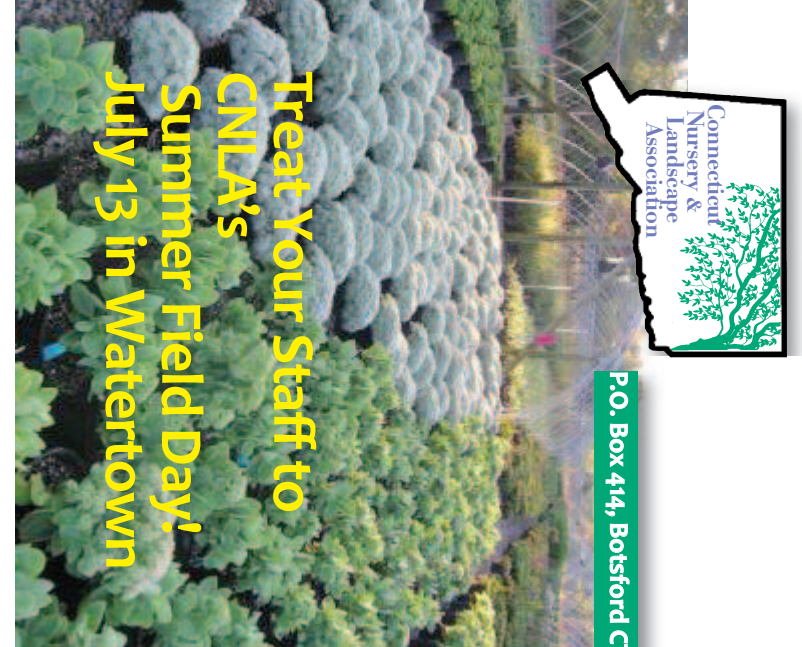
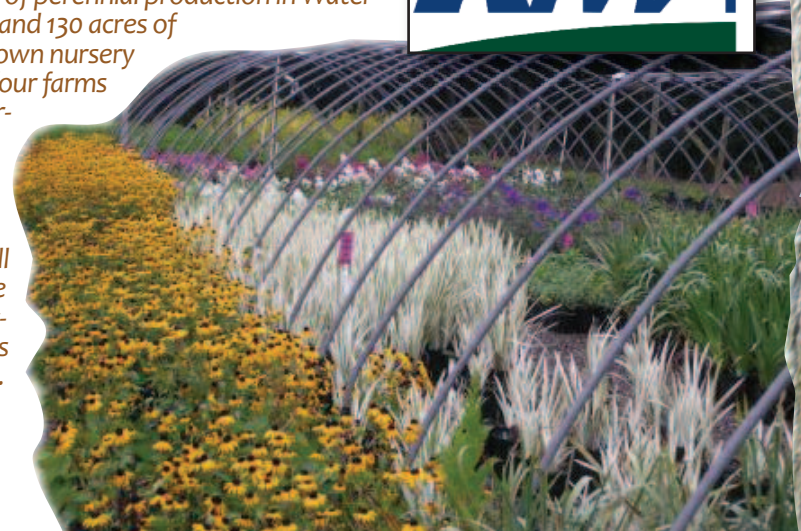
Planters' Choice, LLC, a full service wholesale nursery, was founded in March 1970 by Charles Newman. The original nursery consisted of one propagation house and two fifty foot hoop houses. To service customers, the Newtown location has a 15-acre sales yard that offers a complete line of nursery stock, as well as a diverse line of hard goods. The Watertown facility offers the same high quality product line and service on five acres.

Planters' Choice, LLC has expanded its growing operations to a state of the art four bay greenhouse as well as four others for propagation. 200 hoop houses are used for woody ornamental container production, encompassing 40 acres.

major support from....



At this year's Summer Field Day, you'll see six acres of perennial production in Watertown, and 130 acres of field grown nursery stock on four farms in Watertown and Woodbury, as well as our full service Watertown sales yard.



Treat Your Staff to  
 CNLA's  
 Summer Field Day!  
 July 13 in Watertown

P.O. Box 414, Botstford CT 06404

Address Service Requested

